

ROPPONGI HILLS AND MORI ART MUSEUM 10TH ANNIVERSARY EXHIBITION

# ALL YOU NEED IS LOVE: FROM CHAGALL TO KUSAMA AND HATSUNE MIKU

APRIL 26 (FRI) – SEPTEMBER 1 (SUN), 2013 MORI ART MUSEUM (53F, ROPPONGI HILLS MORI TOWER)

To commemorate the 10th anniversary of its founding, the Mori Art Museum is pleased to present “All You Need Is LOVE: From Chagall to Kusama and Hatsune Miku” from Friday, April 26 to Sunday, September 1, 2013.

In 2003, the Mori Art Museum celebrated its inauguration with “HAPPINESS: A Survival Guide for Art and Life,” an exhibition that dealt with that most universal of themes and an emotion important to all of us: “happiness.” In a similar vein, this exhibition marking the museum’s 10th anniversary focuses on the most fundamental human desire that has continued to provide all manner of inspiration to artists regardless of genre in all times and places: “love.”

From romantic love to familial love and love for humanity, life-giving love is highly complex, arousing feelings such as attachment, jealousy, animosity, resentment, and hostility in us that appear at odds with its peaceful, affirmative image.

In addition, today, with the development of new technologies such as the Internet, love is becoming increasingly diverse, as witnessed by the emergence of phenomena such as virtual love and new social connections between individuals.

Divided into five sections titled “What Is Love?” “A Couple in Love,” “Love in Losing,” “Family and Love,” and “Love Beyond,” this exhibition explores love in all its complexity and variety through around 100 artworks representative of different regions and time periods, including both masterpieces from art history and ambitious new works.

With the experience of the unprecedented disaster of 2011 still fresh in the minds of people in Japan and with various conflicts still raging around the world, we believe now is a good time to explore the diversity and possibilities of love through art.



Gohar Dashti *Today's Life and War*  
2008 Inkjet print 70 × 105cm

Frida Kahlo *My Grandparents, My Parents, and I (Family Tree)*  
1936 Oil and tempera on zinc 30.7 × 34.5 cm  
Collection: The Museum of Modern Art, New York  
Gift of Allan Roos, M.D., and B. Mathieu Roos. Acc. n.:277.1987.a-c.  
© 2012. Digital image, The Museum of Modern Art, New York/Scala, Florence

## PRESS RELEASE

Press Contact Details: Ms. Machino, Ms. Taki, Ms. Shinagawa, Ms. Kiriki  
Public Relations, Mori Art Museum Tel: +81-(0)3-6406-6111 Fax: +81-(0)3-6406-9351  
E-mail: [pr@mori.art.museum](mailto:pr@mori.art.museum) Web: [www.mori.art.museum](http://www.mori.art.museum)

## PARTICIPATING ARTISTS \*in alphabetical order of the artist name (surname)

Adel Abidin, Araki Nobuyoshi, Asada Masashi, Richard Billingham, Constantin Brâncuși, Sophie Calle, Marc Chagall, Chang En-Tzu, John Constable, Salvador Dalí, Gohar Dashti, Giorgio de Chirico, Jim Dine, Tracey Emin, Gimhongsok, Nan Goldin, Shilpa Gupta, Hatsune Miku, Damien Hirst, David Hockney, Idemitsu Mako, Alfredo Jaar, Frida Kahlo, Mary Kelly, Kusama Yayoi, René Magritte, John Evarette Millais, Mori Junichi, Zanele Muholi, Murayama Ruriko, Nishiyama Minako, Okamoto Taro, Yoko Ono, Jean-Michel Othoniel, Francis Picabia, August Rodin, Rong Rong & inri, Sawayanagi Hideyuki, David Shrigley, Laurie Simmons, TANY, Umezawa Kazuki, Waswo X. Waswo with R. Vijay, Entang Wiharso, Yoshinaga Masayuki, Zhang Xiaogang, and others

## HIGHLIGHTS

### ■ Jewels of Western Art History from the Collections of MoMA and Tate

Staged with the cooperation of the Mori Art Museums International Advisory Committee, whose members include directors from the Museum of Modern Art (MoMA), New York and Tate, the exhibition will feature masterpieces from the likes of John Constable, John Everett Millais, Francis Picabia, Giorgio de Chirico, René Magritte, and Frida Kahlo.

### ■ Stellar Works by Stars of the Contemporary Art World

Featuring works by superstars of the contemporary art world including David Hockney, Damien Hirst, Tracey Emin, Sophie Calle, and Zhang Xiaogang among others.



Zhang Xiaogang  
*Bloodline: The Big Family*  
1997  
Oil on canvas  
85.3 × 100 cm  
Collection: Okinawa Prefectural  
Museum & Art Museum

### ■ Violence and Conflict that Arise in the Name of Love, and Unlimited Forms of Love Seeking for Peace and Freedom

Examples of dominance within families, co-dependency in love, attachment and other taboos of love are shown while insights into free love and love for humanity beyond all frameworks including gender are also provided.



Alfredo Jaar  
*Embrace*  
1995  
Video  
1 min.  
Courtesy: Kenji Taki Gallery

### ■ Previously Unseen in Japan! Celebrated paintings by Frida Kahlo and Francis Picabia

Frida Kahlo's *My Grandparents, My Parents, and I (Family Tree)* and Francis Picabia's *Portrait of a Couple* will be exhibited for the first time in Japan.

### ■ A New Installation by Kusama Yayoi

With her solo exhibitions in Paris and London among other places still being talked about, Kusama Yayoi will be unveiling an ambitious new installation. Don't miss this work by an artist who has long explored the theme of love.



Kusama Yayoi  
*Dots Obsession*  
2004  
Installation (mixed media)  
Photo: Nakano Masataka  
Installation view: "KUSAMATRIX:  
Kusama Yayoi," 2004, Mori Art  
Museum

### ■ The Descent of the Virtual Songstress Hatsune Miku!

An appearance by the vocaloid songstress Hatsune Miku, brought to us courtesy of the virtual world. The exhibition is to convey the very latest in social connections and excitement as seen in the form of the "Hatsune Miku Phenomenon" currently sweeping across the globe.



Hatsune Miku  
Illustration by KEI  
© Crypton Future Media, INC. www.piapro.net

## PRESS RELEASE

Press Contact Details: Ms. Machino, Ms. Taki, Ms. Shinagawa, Ms. Kiriki  
Public Relations, Mori Art Museum Tel: +81-(0)3-6406-6111 Fax: +81-(0)3-6406-9351  
E-mail: pr@mori.art.museum Web: www.mori.art.museum

## GENERAL INFORMATION

**Organizer:** Mori Art Museum **Curated by:** Nanjo Fumio (Director, Mori Art Museum) and Mori Art Museum Curatorial Department  
**Venue:** Mori Art Museum, 53F, Roppongi Hills Mori Tower, 6-10-1 Roppongi, Minato-ku, Tokyo, Japan  
**Open Hours:** 10:00–22:00 | Tue: 10:00–17:00 | \*Admission until 30 minutes before closing. \*Open everyday.  
**Admissions:** Adult: ¥1,500, University / Highschool student: ¥1,000, Child (4 years to Junior Highschool student): ¥500  
\*All prices include tax. \*Ticket also valid for Tokyo City View observation deck (excludes Sky Deck). \*Additional entrance fee to the Sky Deck is required.  
**Tel:** +81-(0)3-5777-8600 (Hello Dial)

## EXHIBITION OUTLINE

The single word “love” has various meanings, covering everything from romantic love to familial love, self-love, and love for humanity. To have loving feelings for someone, to cherish something, and to have the forbearance to accept others are probably sentiments we all experience as part of our daily lives. However, love also arouses feelings of attachment, jealousy, animosity, resentment, and hostility, and as such can be the cause of conflict and discord. Violence and fighting in the name of love is a problem that can occur within any group, from the family to the state.

At the same time, we are seeing major shifts in political, social, and religious values around the world. Traditional structures such as the state and the family and concepts such as male-female relationships are likewise metamorphosing and diversifying. We are now able to access vast amounts of information via the Internet, while social media and other new forms of social connection that heretofore never existed are attracting increasing attention. New technologies are shedding light on the form of the reality that surrounds us, from the makeup of our DNA to the vastness of outer space, and as new questions are being raised about the meaning of human life, perhaps love, too, is in the process of emerging in new forms.

Notions and definitions of love can differ according to region, time period, religion, culture, and so on. There is no doubt, however, that themes related to love have continued to provide all manner of inspiration to artists regardless of genre in all times and places.

By presenting a diverse range of artworks gathered from Japan and overseas and organized into five sections titled “What Is Love?” “A Couple in Love,” “Love in Losing,” “Family and Love,” and “Love Beyond,” this exhibition will explore from various viewpoints love in all its complexity and variety.

In the wake of the unprecedented catastrophe of the Great East Japan Earthquake of March 2011, people in Japan have a renewed sense of the true value of love, bonds of friendship, and social connections. Through this exhibition, we would like to remind people of the importance of working together in a world where disasters, recessions, and conflicts seem never-ending to build a world full of love and peace.

Regardless of how the world map changes and of the way methods of human communications possibly develop, love will remain to be a fundamental theme of humankind.

---

## PRESS RELEASE

Press Contact Details: Ms. Machino, Ms. Taki, Ms. Shinagawa, Ms. Kiriki  
Public Relations, Mori Art Museum Tel: +81-(0)3-6406-6111 Fax: +81-(0)3-6406-9351  
E-mail: [pr@mori.art.museum](mailto:pr@mori.art.museum) Web: [www.mori.art.museum](http://www.mori.art.museum)

## SECTIONS

## ■ What Is Love?

Here we flesh out the image of love through symbols and words that signify love. We also delve into the secrets of love hidden behind such familiar symbols as the heart symbol.



Gimhongsok  
Love  
2005  
Stainless steel, car paint  
205 × 85 × 200 cm  
Photo: the Artist & Kunsthalle, Wien

## ■ A Couple in Love

Here we focus on romantic love, a theme important to people irrespective of region and culture, and consider the circumstances in which couples fall in love.



Auguste Rodin  
The Kiss  
c. 1882-87 (model)  
Bronze 87 × 51 × 55 cm  
Collection: The National Museum of Western Art,  
Tokyo. Matsukata Collection.  
Photo: Ueno Norihiro

## ■ Love in Losing

Here we explore the expression of a range of emotions that accompany the loss of love, including feelings of loss, regret, attachment, and consolation.



Okamoto Taro  
Wounded Arm  
1936 / 1949  
Oil on canvas  
111.8 × 162.2 cm  
Collection: Taro Okamoto Museum of Art, Kawasaki

## ■ Family and Love

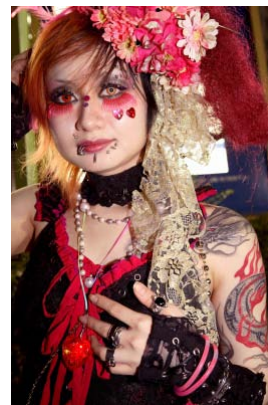
Here we focus on love and the smallest, most intimate community, and the community people encounter first: the family. We explore the complexities and aspects of the interrelations.



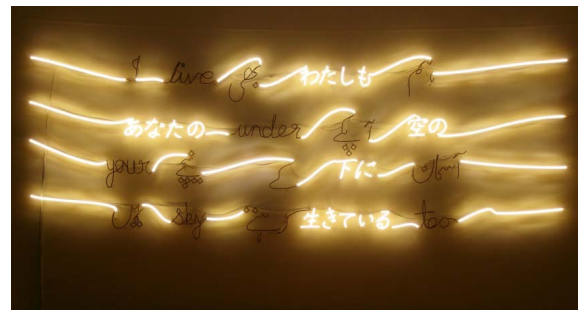
Asada Masashi  
ASADAKE  
2005  
Type-C print

## ■ Love Beyond

Here we explore the diversity of love and its future, including love of objects and of the self, the longing for peace, and new forms of social connection arising from advances in technology.



Yoshinaga Masayuki  
Goth-Loli (Gothic-Lolita)  
2006  
Digital photograph, inkjet print



Shilpa Gupta  
I live under your sky too  
2011  
Acrylic, LED  
254 × 989.5cm  
Installation view: "What a Wonderful World: Visions in Contemporary Asian Art of Our World Today," The Hiroshima City Museum of Contemporary Art, 2012  
Photo: Nakao Toshiyuki (CACTUS)

Press images are available on our website: [WWW.MORI.ART.MUSEUM/ENG/PRESS-RE/](http://WWW.MORI.ART.MUSEUM/ENG/PRESS-RE/)

Please make inquiries by e-mail or by fax if you wish to use images that cannot be found on this website.

## PRESS RELEASE

Press Contact Details: Ms. Machino, Ms. Taki, Ms. Shinagawa, Ms. Kiriki  
Public Relations, Mori Art Museum Tel: +81-(0)3-6406-6111 Fax: +81-(0)3-6406-9351  
E-mail: [pr@mori.art.museum](mailto:pr@mori.art.museum) Web: [www.mori.art.museum](http://www.mori.art.museum)